



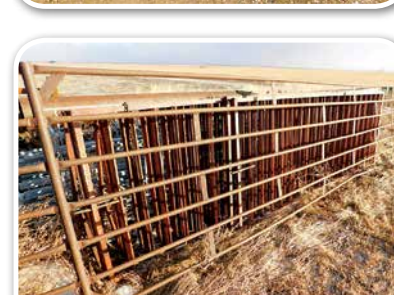
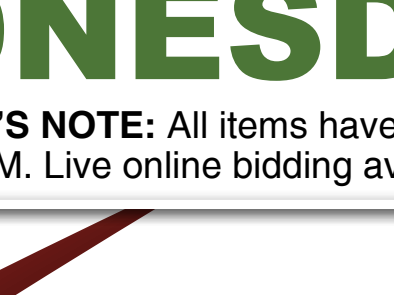
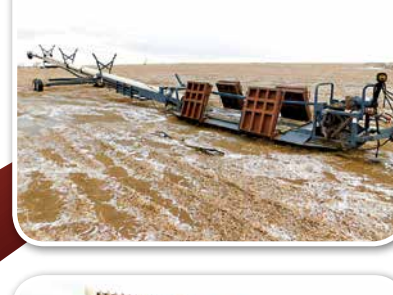
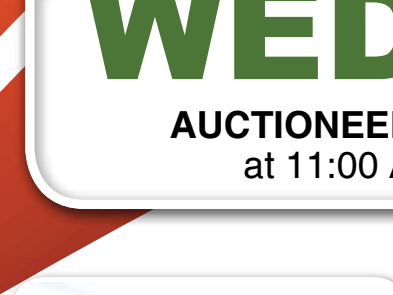
Location: 8855 22nd Avenue SE, Hague, ND.
From Hague, ND, 4 miles east on Highway 11, 7-1/2 miles north on 22nd Avenue, west side of road.

Farm Retirement

AUCTION

WEDNESDAY, APRIL 4 | 11AM 2018

AUCTIONEER'S NOTE: All items have been serviced, are field ready and always shedded. Major equipment begins selling at 11:00 AM. Live online bidding available on major equipment. Registration, terms, & details at SteffesGroup.com.



TRACTORS & LOADER

2011 Caterpillar MT765C, deluxe cab, buddy seat, C9 Cat, 16 spd, powershift, 4 hyd., 43 gpm pump, return flow, 3 pt., quick hitch, large 1000 PTO, integrated Reichardt/John Deere auto steer, (2) add-on fuel cells, radar, cold start package, pivoting steps, ISO 9-pin connector, climate control, deluxe lighting, 120" gauge, (20) front weights, medium width idlers & drive wheels, 25" Camoplast general tracks at 95%, 594 hrs., full inspection done by Butler Caterpillar, S/NAGCC0765CNWCD1050

2004 Caterpillar MT755, deluxe cab, buddy seat, C9 Cat, 16 spd, powershift, 4 hyd., 43 gpm pump, return flow, 3 pt., quick hitch, large 1000 PTO, integrated BeeLine auto steer, radar, cold start package, transmission heater, ISO 9-pin connector, climate control, deluxe lighting, 120" gauge, (20) front weights, medium width idlers & drive wheels, 18" tracks at 40%, 4,725 hrs., New idler wheels, both reaction arms rebuilt at 3,000 hrs., full inspection done by Butler Caterpillar, S/NAGCMT755VALM40730

2013 John Deere 6170R, MFWD, premium cab, buddy seat, IVT w/LH reverser, TLS, 4 hyd., 3 pt., quick hitch, 540/1000 PTO, integrated auto steer, 7" color touch screen display, diff lock, 4-way electric mirrors, HID lights, radar, block heater, 3-function loader ready w/joystick, grill guard, front fenders, 380/85R34 front tires, 380/90R50 rear tires, 1,715 hrs., S/N1RW6170RCDD006578

2013 John Deere H380 hyd. quick tach loader, New 8' high cube quick tach bucket, single pt. hookups, S/N1P0H380XLD002665

HIGH LIFT WHEEL LOADER

2010 John Deere 544K high lift wheel loader, CAH, 4WD, SmartShift powershift, JRB quick tach, aux. hyd., Z-BAR linkage, conventional steering & LH joystick steering, auto diff lock, ride control, heated suspension seat, RH joystick loader controls, cold start pkg., light pkg., 100 amp alternator, front fenders, reversible fan drive, 3 yd. bucket w/bolt-on cutting edge, 20.5-25 tires, 1,009 hrs., S/N1DW544KHCA0629699

HEADS

2005 John Deere 635F flex head, 35" low dam, finger reel, stubble lights, hyd. fore/ aft, CWS air bar, S/NH00635F711637

1993 John Deere 843 non-chopping corn head, 8x30", standard rolls, manual deck plates, steel snouts, shaft drives, S/NH00843X651258

GRAIN CART

2009 J&M 1326 Grainstorm grain cart, 1,300 bu., 22" auger, hyd. spout control, electronic scale, roll tarp, adj. axles, walking tandems, 520/85R42 tires, S/N6040

GPS EQUIPMENT

2013 John Deere StarFire 3000 receiver, SF1, S/NPCGT3TB747861

2012 John Deere StarFire 3000 receiver, SF1, S/NPCGT3TA333299

Trimble FM-1000 display, AG25 receiver, used to run planter & Montag cart

PLANTER

2011 Case-IH 1250ER vacuum planter, 16x30", drawbar hitch, front-fold, 2 bu. boxes w/extensions, PTO driven 22 gpm hyd. pump, hyd. drive variable rate, AccuRow pneumatic row clutches, pneumatic down pressure, Yetter no till floating trash whippers, Yetter 2995 parallel linkage dry fertilizer coulters, SS in-row liquid fertilizer tubes, 400 gal. poly tank w/electric pump, hyd. markers, corn & soybean plates, 10:00-15 tires, 6,750 total acres, 345 operating hrs., S/NYAS009269

FERTILIZER CART

2012 Montag 9A dry fertilizer cart, 9 ton cap., auto steering w/adj. axle, 16 row high output meter, hyd. drive variable rate, SS manifold system, 380/90R46 tires, 6,750 acres, 345 operating hrs., S/NC11039

TILLAGE & ROW CROP EQUIPMENT

2003 Summers Super Coultter Plus, 40', 22" 8-wave notched coulters, hyd. leveling tandems across, weight & light pkgs., rolling choppers, 12.5L-15 tires, S/NC0931, 1,000 acres on complete rebuild of blades, gang bearings & rolling chopper bearings

John Deere 845 row crop cultivator, 3 pt. w/hyd. tail wheel, 16x30", hyd. flat fold, shields, (4) gauge wheels, (3) spring cushion C-shanks per row, (2) guide coulters, light pkg., S/NN00845X005178

SKID STEER LOADERS & ATTACHMENTS

2009 Bobcat S300 skid steer loader, CAH, deluxe instrument panel, keyless start, 2 spd., SJC selectable joystick controls, aux. hyd. 7-pin connector, radio, reverse camera, hand & foot throttle, A71 pkg., sound reduction pkg., Power Bobtach, 12-16.5 tires, 1,396 hrs., S/NA5GP35175

2008 Bobcat S330 skid steer loader, CAH, self-leveling, deluxe instrument panel, keyless start, 2 spd., SJC selectable joystick controls, high flow hyd., aux. hyd., 12 & 7-pin connector, radio, hand & foot throttle, A91 pkg., sound reduction pkg., Power Bobtach, 14-17.5 tires, 1,953 hrs., S/NA5HA11008

2012 Shoule HB-7 rock bucket, 84", 1-1/2" tines, 3" spacing, universal skid steer loader mounts, S/N8015

SKID STEER LOADERS & ATTACHMENTS

2010 Loftness KwikPik 720 hyd. rotary rock bucket, 72", 3/4 yd., 24" opening, universal skid steer loader mounts, S/N08-257

2010 Loftness KwikPik 720 hyd. rotary rock bucket, 72", 3/4 yd., 24" opening, universal skid steer loader mounts, S/N08-256

PICKUPS

2007 Dodge 1500, reg. cab, short box, 4.7L Magnum V8, automatic, 4WD, bed liner, vinyl seats & floor mats, 285/70R17 tires on steel rims, 76,583 miles

2001 Dodge 1500 SLT Laramie, ext. cab, short box, 5.9L Magnum V8, automatic, 4WD, power windows & locks, nerf bars, tow pkg., 265/75R16 tires on aluminum rims, 210,000 miles, 4WD not working

1997 Ford F150, ext. cab, short box, 5.4L Triton V8, automatic, 4WD, power windows & locks, running boards, tow pkg., 265/75R16 tires on aluminum rims, shows 286,801 miles

1987 Ford F350, reg. cab, 6.9L diesel, 4 spd., 11' service body, open top, side compartments, 265/75R16 tires, shows 94,789 miles

GRAIN HANDLING EQUIPMENT

Superior CG7A grain cleaner, 7-1/2 hp., 1 phase, 230v, S/N18444

REM GTS2085 belt conveyor, drive over pit, flip-down ramps, 20" tube, 85' long, PTO, walking tandems on transport, one year on New main conveyor belt, S/NRM-98-2085-0022

FORKLIFT

Clark C-500 forklift, LP, automatic, 5,600 lb. cap., 2-stage mast, side shift, adj. forks, 44" forks, S/N3553094160

OTHER EQUIPMENT

2011 Fargo Parts Rock Grizzly rock screener, 12-1/2x10' grid, spring-loaded, adj. grid spacing, set at 3" space, S/N12-171

2010 MDS 500 rock extractor, (2) 48" removable teeth, 48"x4"x2" teeth, converts to harvest header adapter

Sullair 185 air compressor, 185 cfm, 125 psi max, John Deere 4 cyl. diesel, on trailer, 225/75R15 tires, unknown hrs., S/N004-111587

(2) Caterpillar 25" extreme duty tracks, fits MT700 Series tractors, 95% tread

(16) Caterpillar 125 lb. idler weights

(5) 16" steel portable cattle gates

Approx. (50) 16" galvanized guard rails

(9) pallets of asst. steel fence posts

FRANCIS & KELLY KRUMM | 701.851.0911
or Brad Olstad at Steffes Group, 701.237.9173 or 701.238.0240

Steffes Group, Inc., 2000 Main Avenue East, West Fargo, ND 58078 | 701.237.9173 | SteffesGroup.com

Brad Olstad ND 319, Scott Steffes ND81, Bob Steffes ND82, Max Steffes ND999, Ashley Huhn ND843, Eric Gabrielson ND890, Randy Kath ND894, Scott Gillespie ND1070, Shelly Weinzell ND976



TERMS: All items sold as is where is. Payment of cash or check must be made sale day before removal of items. Statements made auction day take precedence over all advertising. \$35 documentation fee applies to all titled vehicles. Titles will be mailed. Canadian buyers need a bank letter of credit to facilitate border transfer.